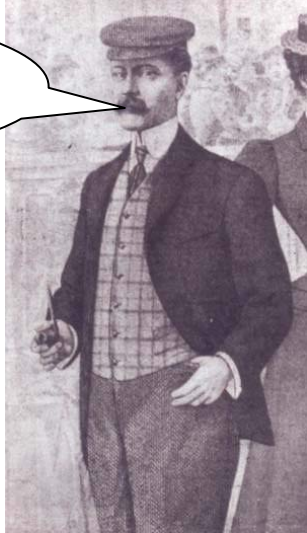


Eastney Beam Engine House - How the Engine Works

Mr Cobban was one of the engineers at the pumping station when the new engines were put in, in 1887. He was known as the engine driver and was paid £3 per week, which was good money. He had one assistant, but it was still very hard work. It was such hard work that the engines were improved after only three months to make it easier.

I need to run an errand; please can you run the engine for me while I am gone?



Would you be able to run the engine for Mr Cobban? Lets see if you know how it works. Fill in the missing words from the list below and find them in the wordsearch.

How the beam engine works:

1. ___ ___ ___ goes in the firebox to heat the water
2. Water boils and turns into _____
3. The smoke goes out of the _____
4. New water comes in to refill the _____
5. Steam goes into cylinders and pushes the _____
6. The piston pushes the _____
7. The beam operates the _____
8. The pump pumps the _____ from the holding tank out to sea
9. Water from the cooling pond condenses the steam back into _____ to be recycled
10. The _____ and the flywheel control the speed of the engine

C	H	I	M	N	E	Y	S	E	G
O	O	P	U	M	P	U	T	N	O
G	B	A	M	R	I	A	W	G	V
O	P	D	L	P	S	T	E	A	M
V	U	M	W	C	T	E	S	P	I
E	S	I	N	B	O	I	L	E	R
R	B	E	A	M	N	L	T	A	W
N	S	E	W	A	G	E	V	J	N
O	V	A	I	W	A	T	E	R	X
R	L	C	E	N	G	I	N	E	S

- Coal
- Steam
- Chimney
- Boiler
- Piston
- Beam
- Pump
- Sewage
- Water
- Governor

